

BAKERSFIELD *Art* ASSOCIATION

AUGUST 2011

- 1 .. August Exhibit—Kathy Schilling
- 1 .. Wall space and Membership due
- 2 .. President's Message
- 2 .. Punch bowl
- 2 .. Kathy Schilling Bio
- 2 .. Kern County Fair Info
- 2 .. Arts Council of Kern Announcement
- 3 .. Don Trainor at Dagny's
- 3 .. Plein Air Trekkers
- 3 .. Art Supply Center
- 3 .. Art Center News
- 4 .. Art Show Calendar
- 4 .. Arts in Business
- 5 .. Classes at the Art Center
- 5 .. Kid's Classes at the Art Center
- 6 .. Annual Membership Info
- 6 .. Contact Information
- 6 .. BAA Website
- 6 .. Membership Application

BAA Art Center Meeting

Monday, August 8th
9:30 a.m.
at the Art Center

BAA Board Meeting

Tuesday, August 9th
6:30 p.m.
at the Art Center

No August General Meeting
COME BY AND VISIT THE ART CENTER

MEMBERSHIP NEWS

New: Don Mc Cluer

A Special Thanks to Member Donations to the BAA for 2011

Art Lover: Michelle Liggett; Stella and Tom Mullins; Cindy and David Stiles
Art Patrons: This could be your name!
Art Champions: Ditto!

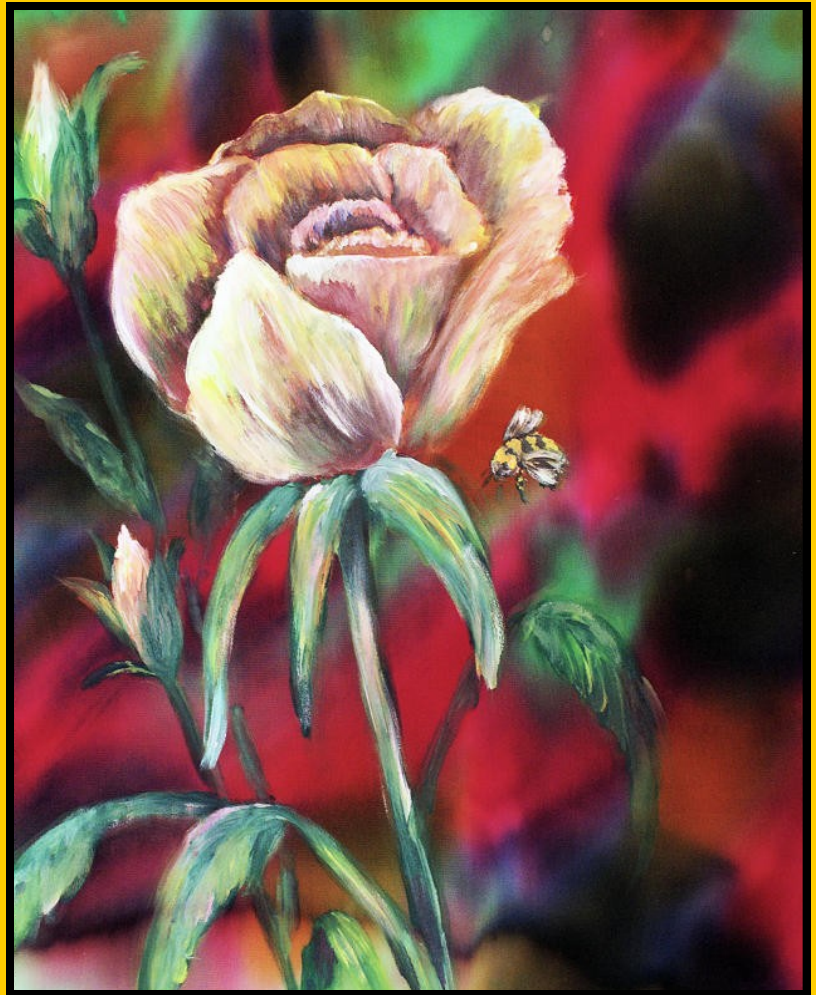
**YOUR DONATIONS ARE APPRECIATED.
CHECK THE MEMBERSHIP FORM
AND HELP THE ART CENTER AND
THE BAA WITH
OUR SPECIAL PROJECTS.**

ART CENTER NEWS

AUGUST SPECIAL EXHIBIT

"MY FASCINATION WITH SILK" KATHY SCHILLING

Reception: First Friday - AUGUST 5th 6-9 pm



"Rose and Bee" by Kathy Schilling

NOW IS THE TIME

Membership is due now, see Toni's article on page 6. 1
Wall space fees are due now for July, August and September.

PRESIDENT'S MESSAGE

Hopefully, all members are using these summer months to create new art works. Summer vacations or even brief trips to areas outside of Bakersfield should provide plenty of opportunities for capturing a feeling or theme. Your Board is not taking the summer off; instead we are attempting to get BAA business lined out so that we are on good footing by September. Spurred by a generous offer from Betty Younger, the Fund Raising Committee is launching the "Betty Younger Fund for Lighting at the Art Center" to obtain funds to improve the lighting in the Art Center (see Kathy's article in this newsletter).

Our Art Center Manager, Ann Sullivan has been dealing with parents in poor health and has been absent from the Art Center for periods of time. Luckily for us there are many BAA members who have volunteered to step up and see that the Art Center continues to function efficiently. They all deserve a big "Thank You."

On July 8th, Phyllis Oliver and students had a Reception for an exhibit of their works at the Art Center. Granted, it was held on a hot, non-First Friday and the exhibit had been hanging for a week, but good effort was put into advertising and providing plenty of nibbles. The turnout was miniscule with non-exhibit related attendees numbering less than the fingers on one hand. It seems to me that our members who are demonstrating their accomplishments deserved better than this. Enough said.

On August 5th, Kathy Schilling will be the featured artist displaying many of her silk works at the Art Center. Let us plan for a much better turn out.

We continue to welcome new members, please provide information about joining to those who you think might be interested. (Note: BAA membership application form available at the Art Center and on page 6 of this newsletter.) While some of our Art Center exhibitors have withdrawn their works from the Art Center due to health or other reasons, new exhibitors with fresh ideas have replaced them. So, drop by and notice the changes taking place at the Art Center.

Anyone with ideas on improving BAA operations is invited to discuss or present these ideas to Board members. This is **your** organization and it can only be as great as BAA members want it to be.

Floyd Dillon, President

MISSING PUNCHBOWL

It seems that the BAA has a large glass punchbowl, maybe two feet in diameter, but it isn't presently at the Art Center.

Please return the punchbowl to the Art Center.

KATHY SCHILLING

(Featured Artist)

"I have been painting most of my life, but only began my teaching studio 15 years ago. I teach children and adults in all mediums. My goal is to give students a chance to discover their talents and gain the enjoyment I have found in Art.

"My favorite medium is silk painting. I love the colors and the freedom the silk allows. I find that if I use a watercolor style on the silk fabric, that the silk shows off better and I get the results I desire.

"I love experimenting with the "dyes" and other water mediums on the silk fabric, it is always fun to see what can happen."

Kathy Schilling will be exhibiting her work through the month of August, with a reception to be held on First Friday, August 5th from 6 to 8 PM.



THE GREAT KERN COUNTY FAIR

ENTRY FORMS are due by AUGUST 5th
ART ACCEPTED on FRIDAY SEPTEMBER 16th
12 noon to 5pm

And SATURDAY SEPTEMBER 17th
9am to 5pm

A fair catalog is available from the fair.
Or a copy is at the Art Center. You can make copies of the entry form.

Contact Joyce Ogborn to sit at the fair at
758-6122 or jwoart1@bak.rr.com. We need 12-3,
3-6, and 6-10 pm shifts. Extra help may be needed on
school days, senior day, and special people day.

ARTS COUNCIL OF KERN'S NEW DIRECTOR

David Coffey, President of the Board for the Arts Council of Kern announced yesterday that the Board has hired Michael Millar for the position of Executive Director. His first day of work was July 5, 2011.

Dr. Millar's professional experience in arts management, community engagement, consulting, and education will support and grow the Council's mission of access, advocacy, and education.

Don Mason
PHOTOGRAPHY

Giclee Printing Services
 4700 EASTON DR. STUDIO#30
 BAKERSFIELD, CALIFORNIA
 661-323-3477

DON TRAINOR AT DAGNEY'S

Don's art will be on display at Dagney's during the month of August. His work will feature his favorite subjects—classic cars and woody station wagons.

Don's work is unique in that he creates his pictures using acrylic paint on glass. The painting is actually done on one side of the glass. When you view the backside of the glass, you will experience the actual painting. The work is called "reverse painting on glass". This process allows Don to portray his subjects as they should be. The car's finish has a truly polished and gleaming effect and the chrome reflects the light and colors that surround the vehicle. Each of Don's creations are a one of a kind work of art and there are no prints or reproductions available.

Don's work is owned by many private and public collections. He has pieces in The San Diego Car Collection, The Blackhawk Car Museum, The Jay Leno Car Collection and The Bakersfield Museum of Art permanent collection. A piece of Don's art has recently become a part of the Bakersfield National Cemetery. The painting, titled "Taps", is on permanent display in their new conference room.

Don's art may be seen at the Art Center, 1817 Eye Street and by going to "Don Trainor Gallery" on the internet.

BETTY YOUNGER LIGHTING FUND

(by Kathy Schilling, Fundraiser Chairperson)

Betty Younger has pledged \$1,000 to improve the lighting of the Art Center. This is a much needed project to help our Center look more inviting to the public and to better show off your art work in the best possible "light".

We all will benefit from this addition, but we need your help to make this possible. All BAA members are asked and needed to help support your Art Center.

Each person could help with either a small or large donation. We are now getting electrical "bids" for the lighting project. I will keep you posted as to how much we need and how much we are raising. As this is a nonprofit, you will be able to deduct this on your income taxes. All donations marked for the lighting will go straight to the Betty Younger Lighting Fund.

I am preparing a form for your receipt which will be available at the Art Center. You can stop by any time with your donation or call me (Kathy @ 661-496-3963) and I will help you. Thank you for all you do.

PLEIN AIR TREKKERS

(by Beth Carstens, Plein Air)

A "Trekker-Mixer" is planned for Friday, August 12th from 10:00 a.m. till 11:00 a.m. to be held at the BAA Art Center.

The Mixer will include a meet and greet with our new Plein Air Chairperson, Beth Carstens; also a review of Calendar of Events, future Scheduling of Outings, and Sign-ups for the December "Kern Alla-prima" Plein Air show at the BAA Art Center.



Members only may RSVP to the BAA directly or send an e-mail to Beth Carstens at

pleinelizajane@gmail.com .

ART SUPPLY CENTER

(by Toni Lott)

Those of you who haven't taken advantage of the Art Supply Center special ordering are missing some bargains. I order around the 20th of the month and supplies come in by the end of the month. I am not charged sales tax and sometimes get a discount. Sales tax is charged at the Art Center. I can order from Dick Blick, Cheap Joes, Jerry's Artarama. And Clear Bags. Catalogs are at the center or check on line.

We recently had a large selection of Pastel supplies donated to us. Those items are on sale now at a reduced cost because they were used for one class by the donator. Items include pastel pencils, Nu pastels, Rembrandt Soft Pastels, Color Fix papers and Mi Teines paper.

ART CENTER NEWS

(by Ann Sullivan, Manager)

The holiday season is rapidly approaching. Just check out the department stores. The Art Center is working to attract customers by planning some holiday decorations. Thanksgiving and Christmas would be useful. If you have some decorations that you can donate, contact Toni.

Each month we will have a table set up for small items priced under \$100. The theme for August is the "beach". Bring your items in asap. We will check for prints in the print racks that follow the same theme. September's theme will be "fall colors".

There is still wall space available for new exhibitors in the Art Center. Contact other artists to join us at the Art Center.

ARTS IN BUSINESS

(by Charlotte White)

Bakersfield Symphony (exhibits at concerts), Rabobank Convention Center. Next show: On September 16, 2011, the BAA will have a special area at the Symphony for Hispanic themed paintings, photographs and sculptures in honor of Mexico's Independence. This is in addition to the regular show. Mariachi music will be part of the evening's entertainment. Bring all art to Rabobank at noon. All unsold pieces may be picked up after the intermission. No cost to participate. 30% commission.

Dagney's BAA Art Gallery, 1600 20th Street. August: Don Trainor; Sept. Jim Bates; Oct. Patti Doolittle; *Cindy Stiles*, Coordinator. 30% Commission (20% to Dagney's, 10% to BAA).

Dream Center and Coffee House/Dagney's II/ BAA Student Gallery, 1212 18th St., August 2011—Bakersfield Christian High, Teacher Nancy Cavaini. BCHS Students: Emily Cole, Joseph Stearns, Gina Carosella and Zackary Smith. *Charlotte White*, Coordinator.

Epic Jet Center/ BAA Art Gallery, 1105 Douglas. Group show featuring Iva Fendrick, Ann Sullivan, Patti Doolittle, and Charlotte White. Iva Fendrick and Charlotte White Co-Coordinators. 30% Comm. (15% to Epic, 15% to BAA).

Guild House/ BAA Art Gallery, 1905 18th St. *Norma Neil*, Coordinator. Not showing for the summer (40% commission at this location).

Majestic Vanity Day Spa, corner H & 19th Street. Michelle Stone, Patti Doolittle, Shirley Rowles, Jody Cheeseman, Elleta Abuliel, Norma Eaton, Linda Olsen, Phyllis Oliver, Jeanie Truitt, Virginia Cimental, Beverly Carrick, and Charlotte White. Change-out September. Coordinator: Charlotte White. 30% Commission. **Volunteer coordinator wanted for this location.**

Stars Theatre/BAA Art Gallery, 1931 Chester Ave. *Iva Fendrick and Patti Doolittle*, Co-Coordinators. *Cindy Stiles*, Charlotte White, Floyd Dillon, Norma Neil, Cherice Hatton, Ann Sullivan, Elleta Abuliel, Coral Poole-Clark, Patti Doolittle and Iva Fendrick. 30% BAA Commission.

University Square/ BAA Art Gallery, 2000 K Street. BAA Art Gallery. Jim Bates, Virginia Cimental, Norma Neil, Coral Poole-Clark, Margaret Stephens, and Ann Sullivan. Nancy Merrick, Coordinator. Change-out in fall. Call Nancy Merrick to participate. 30% BAA Commission.

Art in Businesses Guidelines: 16"x20" minimum size, max 2 paintings per artist/location unless a one-artist show. All current BAA members may participate; just call coordinator of each site; all work must have a wire for hanging; D-rings recommended; price tags at Art Center or make your own; on the back place name of painting, copyright date/date printed, artist's name and phone no.; and 25% to 40% commission depending on location.



KATHY SCHILLING ART STUDIO

NEW ADDRESS

**12426 JOMANI DRIVE #B
BAKERSFIELD, CA 93312**

661/587/4400

(STUDIO)

661/496/3963 (CELL)

Schillingartstudio@sbcglobal.net

Schillingartstudio.com

ART CLASSES FOR CHILDREN TO ADULTS

ART SHOW CALENDAR

(by Ann Sullivan and Charlotte White)

Featured Artist) for August: "My Fascination with Silk" Artist Kathy Schilling shares her wonderful silk creations. Reception on First Friday, August 5th; 6-9pm. Come by for refreshments and entertainment.

Oct: Kern County Fair Winners

Dec.: Kern A La Prima: Plein Air Paintings of our beautiful county

WASCO ROSE FESTIVAL BAA SHOW

All BAA members are invited to enter this group show Saturday, September 10th at the Wasco Festival of Roses 8:30 p.m. (set-up) to 4:30 p.m.. All artists will be set up inside and in front of the Veterans Memorial Building on the corner of Barker Park on Poso, in Wasco. Each artist may have up to 6 A-frames or panels, a print rack, a small table, a chair, and a card rack. Space is limited so the artists arrange the show as best meets the needs of all participants. Items welcomed: original paintings, photography, prints, cards, bookmarks, jewelry, etc. If you want to display not on this list, please e-mail Charlotte White. There will also be an area where only ROSE paintings and photographs will be exhibited. Artists do not have to stay at the show all day. They may come at 8:30 a.m. and deliver their paintings and in then return at 4:30 p.m. to pick them up again.

SYMPHONY SHOWS

December 9-11, 2011 the BAA show - paintings in honor of the Nutcracker Ballet. Bring all art to Rabobank at noon on Friday, December 9th. All unsold pieces may be picked up after the intermission on Sunday December 11th. No cost to participate. 30% commission.

TWO NEW THEME SHOWS at BUSINESSES

We will be having a group show in the Guild House in the fall, "Historic Bakersfield", and at Dagney's Coffee Shop in November, will be "Wake Up and Smell the Coffee" group show. Details to come.

CLASSES AT THE ART CENTER

(by Carol Bradshaw)

ADULT ART CLASSES

Landscape Watercolor with Iva Fendrick. Explore the different techniques of using watercolor. If you like watercolors, this is the class for you. **No pressure, just fun.** Classes are on Wednesdays, August 10, 17, 24 and 31. (no class on August 3) from 9:30 to 12:30. Cost is \$100 for four classes or \$25 per class for drop-ins. **Drop-ins are welcome.** Make checks payable to Iva Fendrick - your check will hold your place in class.

For additional information or to register contact: Iva Fendrick at 661 872-2332 or at 661 303-5327.

Beginning Drawing with Carol Bradshaw. This is a structured series of 6 three-hour classes in graphite for the person who has never drawn before or for those who wish to brush up on the basics with drawing. Classes start on Thursday, September 15 and continue through Oct 20 from 9-12 am. Cost is \$150 for the 6 week course. Supply list with registration.

For additional information or to register contact: Carol Bradshaw at 760-376-6604 or bradshawartist@earthlink.net

Beginning Watercolor with Carol Bradshaw. A structured series of 10 two-hour classes, for the person who has never painted in watercolor before, or for those who wish to brush up on the basics. Class subject is available from the instructor for those who wish to drop-in. Supply list with registration. Classes start Tuesday, September 13 and continue through November 15 from 2:30 to 4:30 p.m. Cost is \$200 for the course or \$20 per class for drop-ins.

For additional information or to register contact: Carol Bradshaw at 760-376-6604 or bradshawartist@earthlink.net

Beginning Drawing - Continued with Carol Bradshaw. This is a series of 6 three-hour classes in graphite for the novice artist. Classes are from 9-12 on Thursdays, September 15 through October 20. Cost is \$150 for the 6 week course. Supply list with registration.

For additional information or to register contact: Carol Bradshaw at 760-376-6604 or bradshawartist@earthlink.net

Pencil Lover's Group with Carol Bradshaw. This class is for artists who have previous drawing experience. Students will be working on their own projects with instructor guidance and critique. Classes are held on the 2nd and 4th Thursday of the month from 12:30 to 3:30 p.m. Classes start September 8th and continue through December 8th. Cost for the 6-week course is \$120 or \$20 per class. **Drop-ins are welcome.**

For additional information or to register contact: Carol Bradshaw at 760-376-6604 or bradshawartist@earthlink.net

Beginning Oil Painting with Glen Jelletich. Always wanting to paint in oil and didn't know where to start? This is the class for beginning students in oil. Students learn the three color system as well as secondary colors, including brown and black. Use of different brushes and a variety of brush strokes will also be taught. Classes are Fridays from 2:30 to 4:30 p.m. Cost will be \$15 per class. **Drop-ins welcome.**

For more information about dates or to register contact: Glen Jelletich at 661-399-3707.

Art classes continued

Watercolor Painter's Group with Carol Bradshaw. This continuing series of 10 classes (drop-ins welcome) will focus on washes. This class is for artists who have previous experience in watercolor. There will be a short 30 minute demo and/or instruction at the beginning of each class. Students will be working on their own projects with instructor guidance and critique. Bring your watercolors and current project! Classes are held on Tuesdays from 12:30 to 2:30 p.m. Classes start September 13th through November 15th. Cost for 10 week course is \$150 (or \$15 per 2 hour class). **Drop-ins are welcome.**

For additional information or to register contact: Carol at 760-376-6604 or bradshawartist@earthlink.net

Open Studio on Wednesday Afternoon. Open Studio is on Wednesdays from 1 to 4 pm. Cost is \$3 per member, \$5 non-members payable to BAA.

For more information, contact: Art Center 869-9320 or: Toni Lott at 661-205-3488 or tlframer@gmail.com.

All Media – Focus on Color with Phyllis Oliver
Dates and times to be announced.

Future Watercolor/Pen and Ink with Iva Fendrick
Dates and times to be announced.

CHILDREN AND YOUNG ADULT ART CLASSES

Students will create a scrap book page for each class, cartooning on card stock with embellishments from pencil and felt markers. Summer classes on August 8 and 15th, on Monday mornings from 10-12 a.m. Please bring your own photos, all other supplies are provided. A 12 x 12 album is optional. Class cost is free. This project is sponsored by the Arts Council of Kern

For more information or to register, contact: Jeanie Truitt at 1-661-869-2320

NEW FOR SEPTEMBER

Mommy and Me with Chela Brehmer; Dates and times to be announced.

FUNDRAISING—NEW RAFFLE

(by Kathy Schilling, Fundraising)

Check out our latest fundraising effort when you attend First Friday on August 5th at the Art Center.

The fundraising committee has purchased an Amazon KINDLE to be auctioned off at our First Friday reception in October. Tickets will be available at the Art Center, Schilling Studio and from any committee member starting the August First Friday for \$5 per ticket or special \$20 for 5 tickets.

Bakersfield Art Association (BAA)

ART CENTER

1817 Eye Street, 93301

HOURS: Tuesdays thru Thursdays

11 to 4 pm

Fridays 11 to 6 pm

First Fridays to 9pm

Saturdays, Sundays &

Mondays closed

TELEPHONE: 869-2320

Newsletter Editor: Toni Lott

Contact information: 661-205-3488 or

tlframer@gmail.com

BOARDS CONTACT INFORMATION

President, Floyd Dillon, 873-7425

Vice President, Toni Lott 873-4255/205-3488

Secretary, Stella Mullins, 587-5211/477-6933

Treasurer, Elleta Abuliel, 832-0333

Parliamentarian, Shirley Rowles, 589-1654

Art Center Manager, Ann Sullivan, 328-9237

Satellite Shows, Charlotte White, 330-2676

Finance, Jim Bates, 871-7640

Fund Raising/Scholarships, Kathy Schilling

664-9504/496-3963

Publicity, Norma Eaton, 541-231-5459

Workshops, Duane Anderson, 599-3145

COMMITTEE CONTACT INFORMATION

Art Supply Center, Toni Lott, 873-4255

Classes, Carol Bradshaw, 760-376-6604

Historian, Bonnie West, 665-8480

Marketing - VACANT

Membership, Jeanie Truitt, 366-4661/871-4271

Newsletter, Toni Lott, 873-4255/2053488

Plein Air, Beth Carstens, 809-3954

Website, Emily Mbong, 559-473-8838

BAA WEBSITE

www.bakersfieldartassociation.org

Bakersfield Art Association

P.O. Box 386

Bakersfield, CA 93302

RETURN SERVICE REQUESTED

Dedicated to the enrichment and empowerment of local artists since 1944

BAA ANNUAL MEMBERSHIP DUES

(by Toni Lott, Membership)

WE STILL HAVE QUITE A FEW MEMBERS WHO HAVE NOT PAID THEIR ANNUAL DUES. A LIST OF DUES BY DUE DATES IS AVAILABLE AT THE ART CENTER IF YOU NEED INFO ABOUT YOUR DUE DATE.

THE BAA NEEDS YOUR MEMBERSHIP TO CONTINUE PROVIDING AN ART CENTER AND SCHOLARSHIPS. OUR FEES ARE LOW AND CAN BE CONSIDERED A DONATION ON YOUR TAXES. PLEASE PAY NOW.

WE VALUE OUR RELATIONSHIP WITH EACH OF YOU.

TO CONTINUE SHOWING THEIR ART, ALL PARTICIPANTS IN THE ART CENTER MUST PAY THEIR DUES BY AUGUST 31st.

CONTACT TONI LOTT at 205-3488.

BAKERSFIELD ART ASSOCIATION

Membership Information

NEW RENEWAL RETURNING

Please print clearly

Name _____ Date _____

Phone # _____ Cell: _____

Address _____

City _____ State _____ Zip _____

e-mail address _____

Newsletter and special info MAIL _____ or EMAIL _____

July 2011 renewal

check space that applies:

\$45 Individual \$40 Seniors (62 plus) \$30 Student (age under 25 full time) \$55 Family (same household)

\$100 Art Lover - Recognition in the BAA Newsletter.

\$200 Art Patron - Recognition in the BAA Newsletter and in the Art Center

\$300 Art Champion - Recognition in the BAA Newsletter, in the Art Center and 10% off one piece of art in the AC

All membership dues are donations and tax deductible